

China Chemical & Pharmaceutical Group (CCPG)

October 23, 2007

Beijing, China



熱情 創新 關懷 健康

Agenda



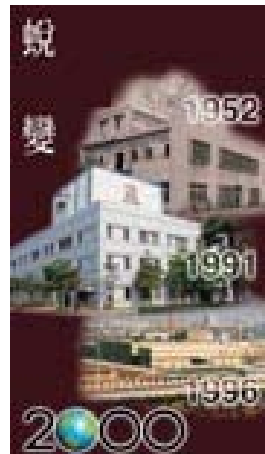
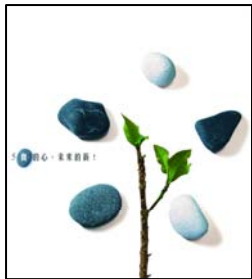
1. CCPG Vision and Core Value

2. CCPG Family

3. Company Presentations



CCPG Vision and Core Value



Vision

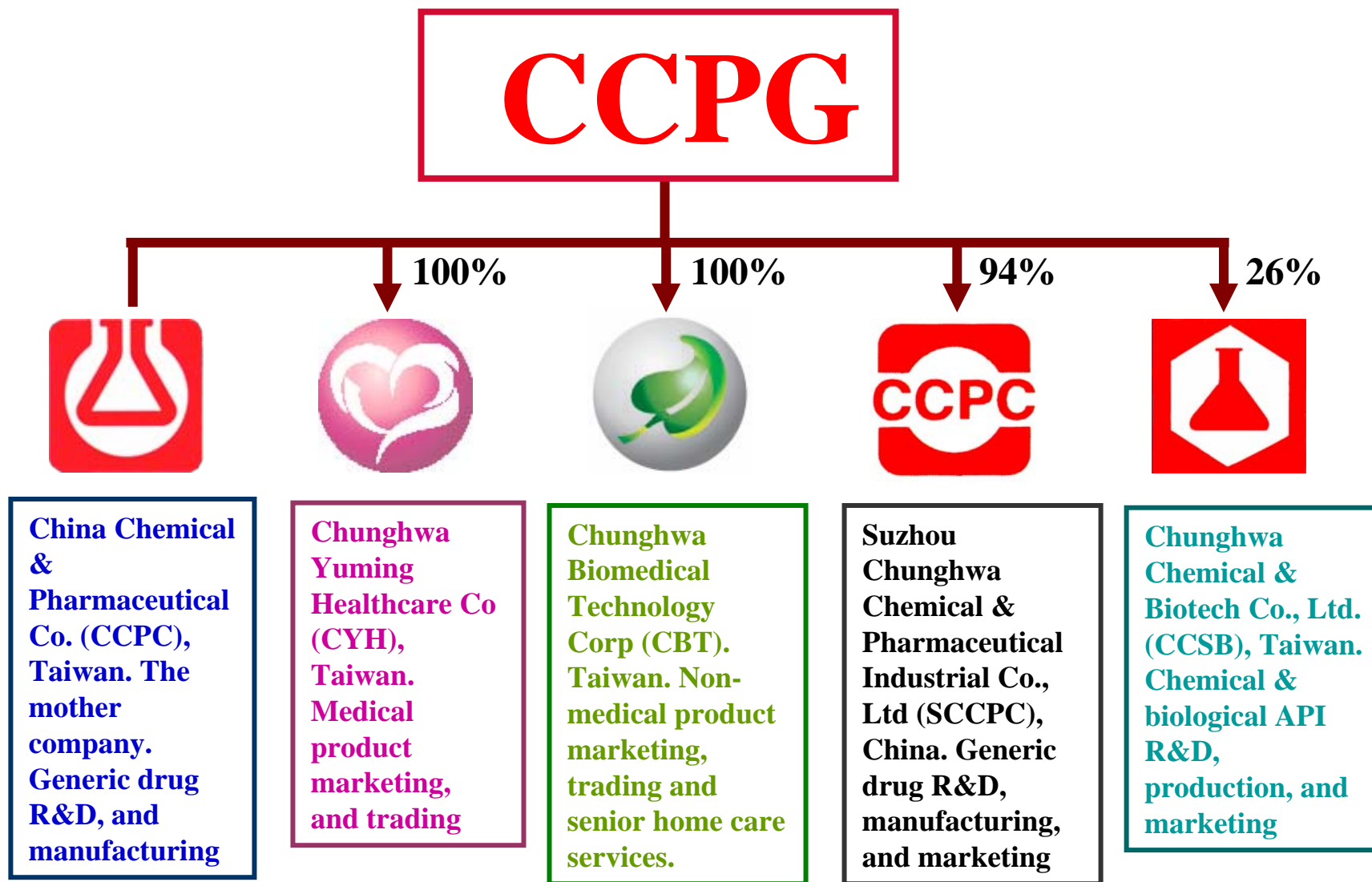
To be the Most
Trusted Healthcare
Enterprise in
Chinese World

Core Value

Passion, Innovation,
Care, Health



CCPG Organization Chart



China Chemical & Pharmaceutical Co., Ltd. (CCPC)



- Founded in 1952
- The first public listed pharmaceutical in Taiwan Stock Exchange (market capital US \$214M as of 10/18/07)
- The first generic pharmaceutical in Taiwan to meet GMP (1984) & cGMP (2001) guidelines
- The first Taiwanese pharmaceutical to invest in China (1993)
- The largest contract manufacturer for human pharmaceuticals & animal health products in Taiwan



CCPC Headquarters and Manufacturing Plants

Area : 57,000 m²

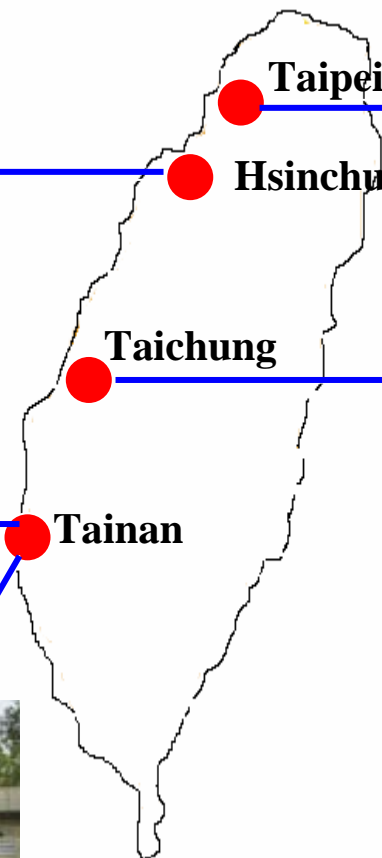
Product range: human products



Area : 35,000 m²

Product Range : Animal health products

Capacity:(one shift, per year)
Tablets: 552M
Capsules: 85M
Film coating tablets: 425M
Sugar coating tablets: 142M



Taipei

Hsinchu

Taichung

Tainan



Headquarters



Area : 2,300 m²

Product range :
Penicillin products,
Oral & Injectable forms

Capacity (one shift,
per year)
Capsules : 6.5M
Vials:1.2M

Tainan plant II for
human products

CCPC Product Forms

Product lines include

- ✓ Tablets
- ✓ Capsules
- ✓ Injection
- ✓ Solutions
- ✓ Ointments
- ✓ Veterinary products
- ✓ Premixes, additives



CCPC Major Products

Anti-infective drugs

Cardiovascular agents

Hypolipedemics

Remedies for peptic ulcer

Anti-pyretics & analgesics

Anti-diabetic agents

Anti-tussives & expectorants

Anti-histamines

Remedies for asthma

Anti-fungal and anti-viral agents

Sedative, hypnotics & tranquilizers

Electrolytes & hemodialysis preparations

Vitamin preparations

Animal health products



CCPC Sales Channel Analysis



Human drugs
Medical instruments



Hospitals, Clinics, Drug
stores and Distributors



Animal drugs
Vet related products



Vets, Livestock farms,
Animal feed plants and
Distributors



Consumer products
Food Supplement



Drug stores, Distributors,
Specialty retail stores and
Wholesalers



Toll manufacture



Taiwanese, Japanese and
other pharmaceuticals



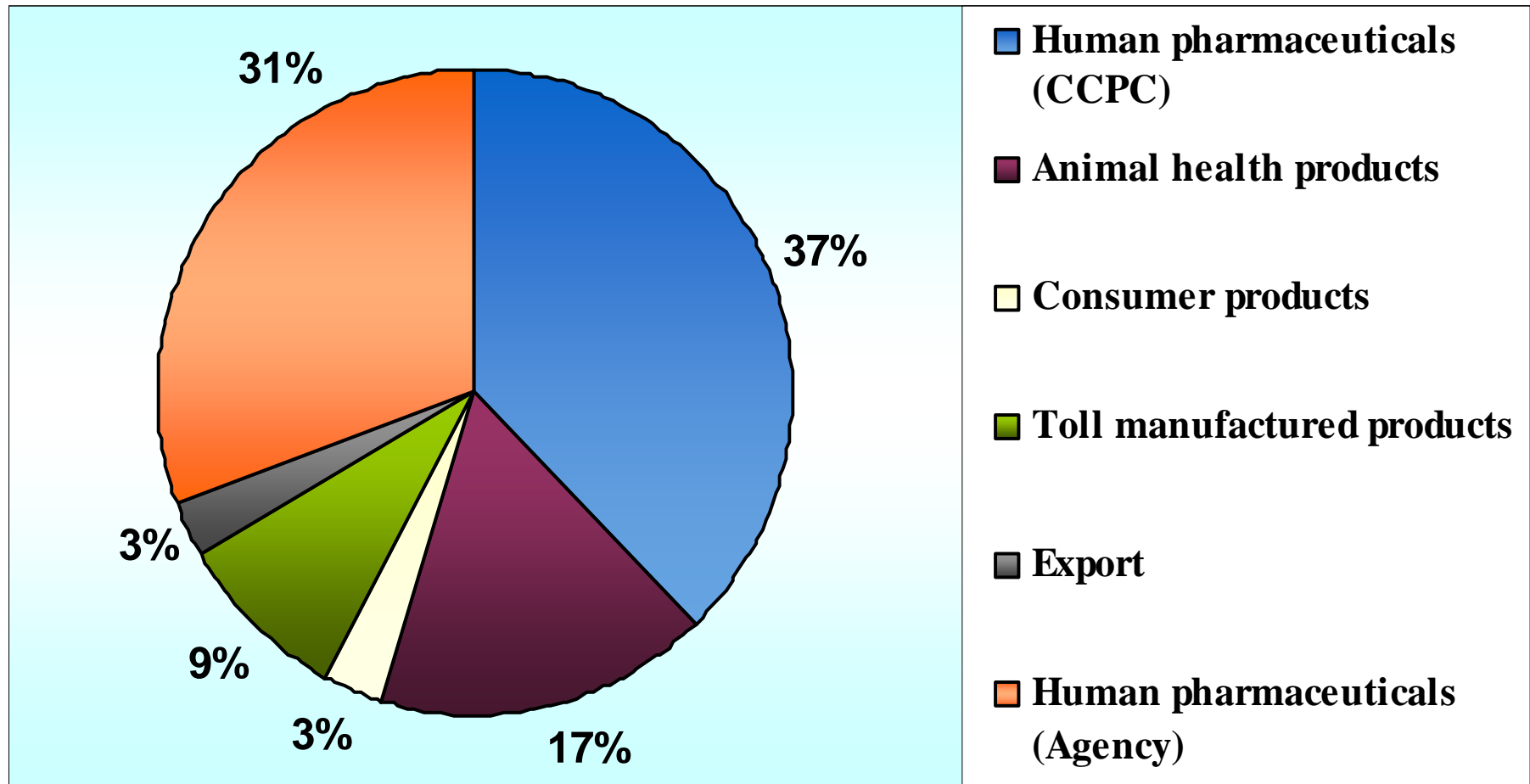
Export



Vietnam and others



CCPC Business Analysis

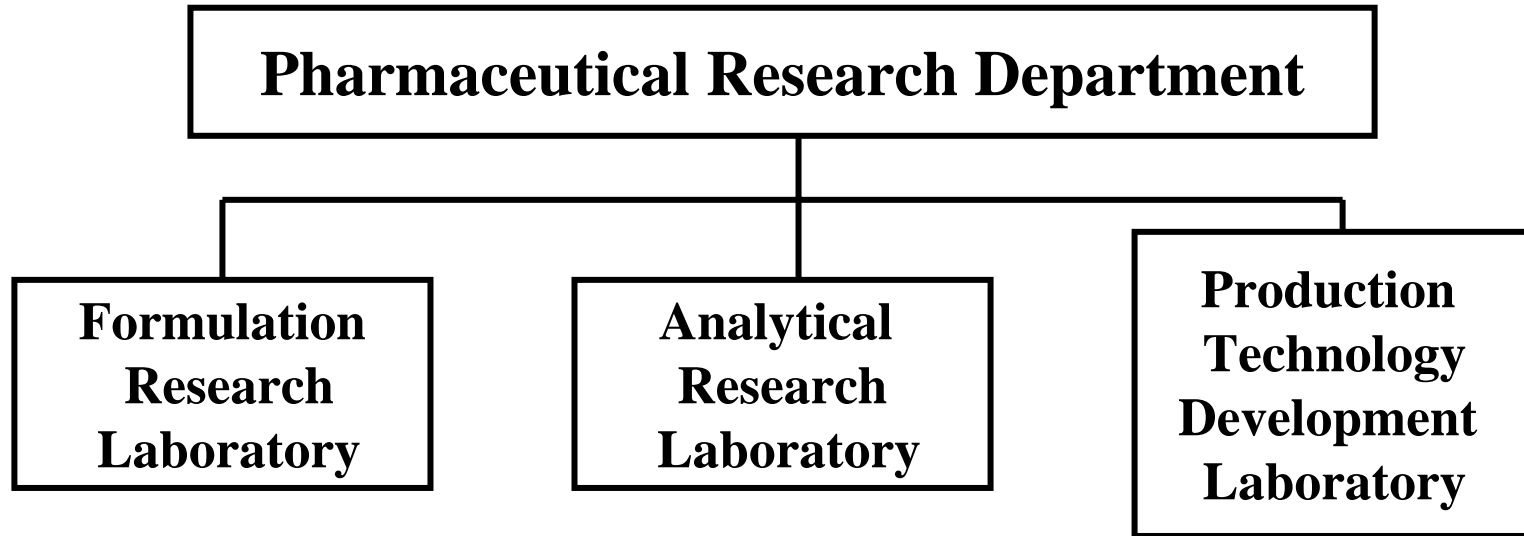


Total Sales: US\$ 77M

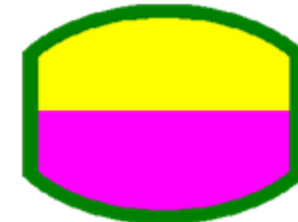
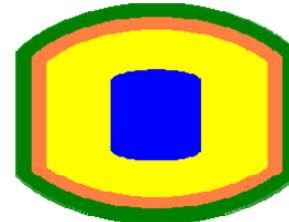
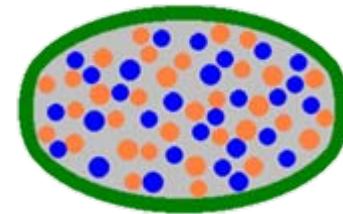
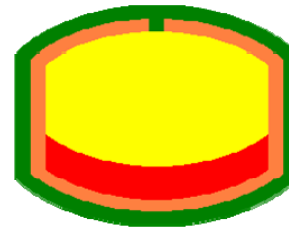
Source: CCPC Annual Report, 2006



Pharmaceutical Research Department



- Osmotic Pump Device
- Repeated-Release Device
- Matrix Device
- Multiple-Layer Device



How We Collaborate with Our Partners

- **R&D collaboration: Co-R&D, co-promotion of new drug, and new dosage product**
- **Contract Research**
- **Contract Manufacturing**
- **Agency**
- **Distribution Services**
- **New Business Development**



CCPC Partners

- Ono, Japan (Exclusive Agent)
- Ajinomoto , Japan (Manufacture & Distribution of solution)
- Takeda , Japan (Toll Manufacture)
- Shionoki , Japan (Toll Manufacture)
- Daiichi-Sankyo , Japan (Toll Manufacture, Distributor)
- Roche (Manufacture & Distribution of Naproxen)
- Yamanouchi, Japan (Toll Manufacture)
- GSK (Toll Manufacture)
- Johnson & Johnson (Toll Manufacture)
- Eli Lilly (Toll Manufacture, Animal Health products)
- Pharmacia & Upjohn (Toll Manufacture, Animal Health products)
- Pfizer (Toll Manufacture, Animal Health products)
- Impax Lab, USA (R&D)



CCPC Business Goals

Short and Mid Term

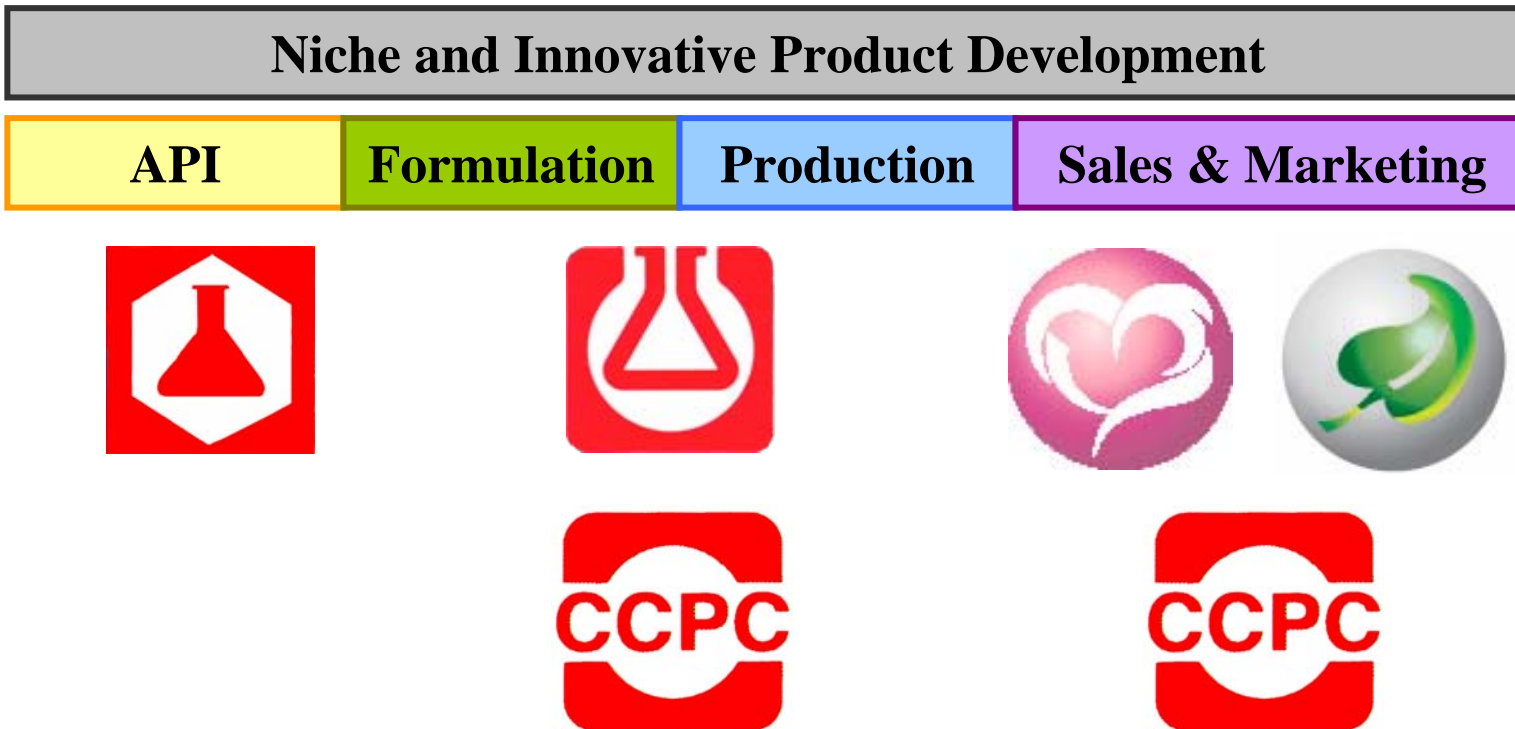
- ✓ Further expansion and promotion products to local hospitals, clinics, drug stores to maximize CCPC market shares and sales
- ✓ Obtain new products and medical devices distribution and marketing rights in greater China areas
- ✓ Development of non-medical homecare services

Long Term

- ✓ Develop niche generic and manufacturing capabilities
- ✓ Develop high profit margin consumer products
- ✓ Develop science-based, patent-protected health foods
- ✓ Establish partnership with overseas pharma and wholesaler



CCPG is an Integrated Pharmaceutical



We Focus on niche product development and partnership



Chunghwa Chemical Synthesis & Biotech Co., Ltd. (CCSB)

•Founded in 1964

- ✓First registered and one of the largest bulk pharmaceutical chemical manufacturers in Taiwan
- ✓First Taiwan FDA approved plant (1984)

•Turning Points in 1997

- ✓Formed the New Management Team
- ✓Invested US\$ 20 million to construct
 - 4 New cGMP Plants for Synthetic Products
 - 2 New cGMP Plants for Biotechnology Products
 - Established US Sales Office-Pharmaports in 2000
- ✓Products
 - Abandon β -Lactam antibiotics
 - Developing both synthetic & biotech products
 - Participate new drug development and contract manufacturing
- ✓Global Market Oriented with Emphasis on
 - U.S.A., Europe, Japan



cGMP Inspections

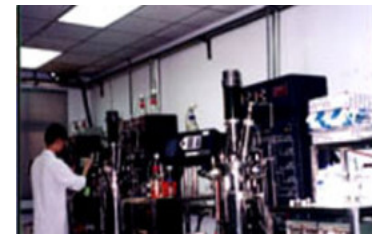
- **US FDA Inspections:**

First inspection in 1984;

the last two inspections on April 1-3, 2002 and Dec. 2, 5-7 2005:
both synthetic and biotech plants were inspected and approved

- **Customer Inspections 1999-2005**

- **Local Health Authority Inspections 2002-2005**



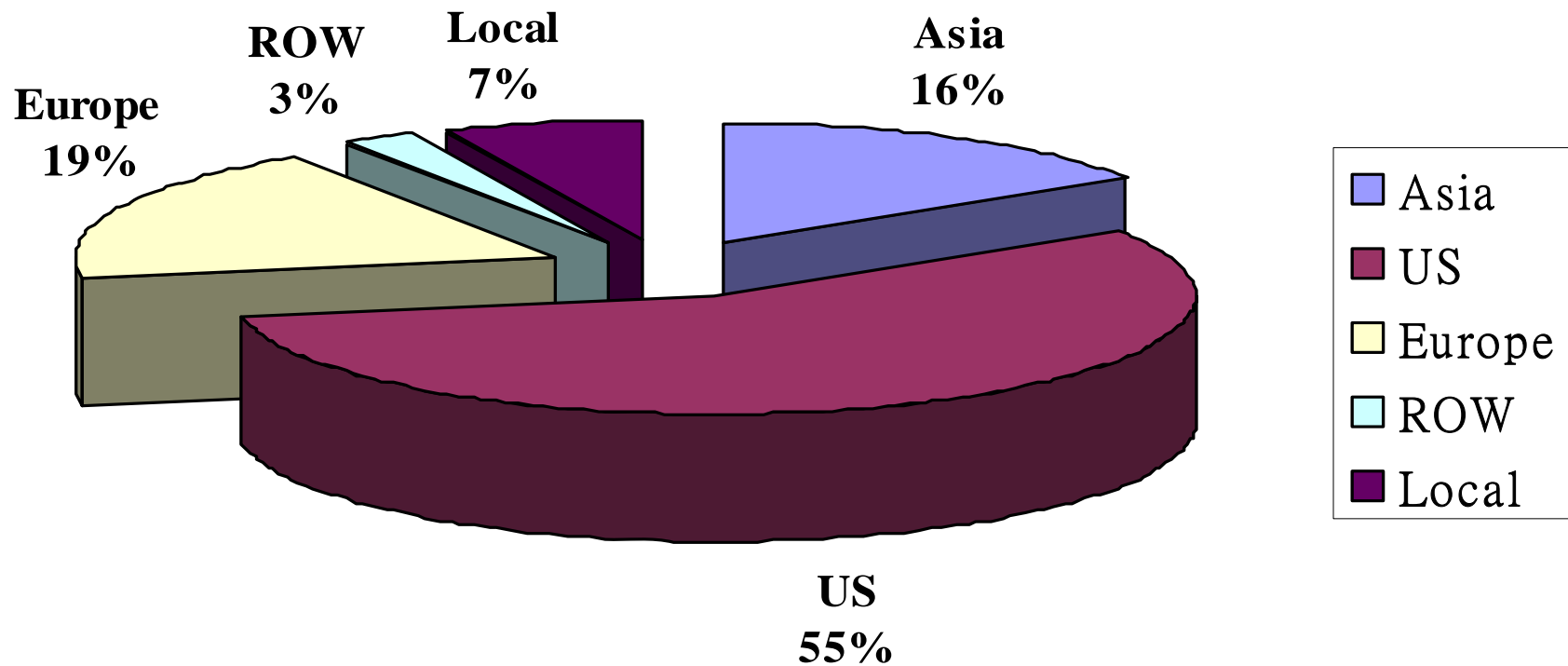
DMF List

- | | |
|---|--|
| [1] Acetaminophen
<i>DMF 5061</i> | [10]Norfloxacin
<i>DMF 9360</i> |
| [2] Calcium Polycarbophil
<i>DMF 14421</i> | [11]Oxaprozin
<i>DMF 13119</i> |
| [3] Chloramphenicol
<i>DMF 12985</i> | [12]Pravastatin Sodium
<i>DMF 14235; CEP 2004-168</i> |
| [4] Dexbrompheniramine Maleate
<i>DMF 8625</i> | [13]Sodium Starch Glycolate
<i>DMF 14418</i> |
| [5] Fluconazole
<i>DMF 14419</i> | [14]Rapamycin
<i>DMF 17399</i> |
| [6] Glipizide
<i>DMF 11024</i> | [15]Carisoprodal
<i>DMF 17400</i> |
| [7] Guaifenesin
<i>DMF 14234</i> | [16]Trandolapril
<i>DMF 17573; UK A19646-A7789</i> |
| [8] Methocarbamol
<i>DMF 13080</i> | [17]Glibenclamide
<i>DMF18266</i> |
| [9]Nifedipine
<i>DMF13115</i> | [18]Mycophenolate Mofetil
<i>DMF 18494</i> |
| | [19]Tacrolimus
<i>DMF 18985</i> |



Sales Area in 2006

Sales Area in 2006



Sales in 2006 = US\$23 millions



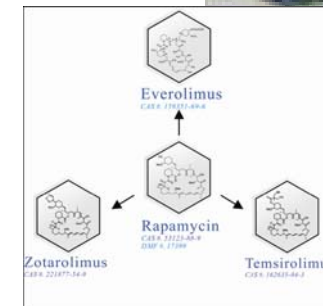
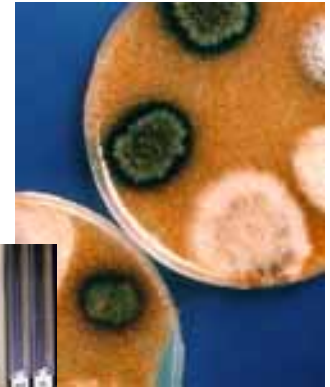
New Product Pipeline

•Rapamycin Derivatives (Samples Available)

- ✓Everolimus
- ✓Zotarolimus
- ✓Temsirolimus

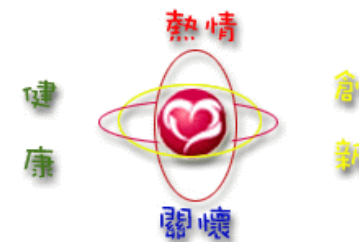
•Products under Investigation

- ✓Caspofungin: Antifungal
- ✓Dutasteride: DHT Inhibitor
- ✓Mycophenolate Sodium: Immunosuppressant
- ✓Mycophenolate HCl: Immunosuppressant



Chunghwa Yuming Healthcare Co (CYH)

- CYH is 100% owned by CCPC to promote and market its products
- Focusing on human pharmaceuticals
- Agency for multinational pharmaceutical companies
- Actively looking for export and import business



CYH Sales Forces and Distribution Channels

North

3 sales teams

Sales force: 72 people

Central

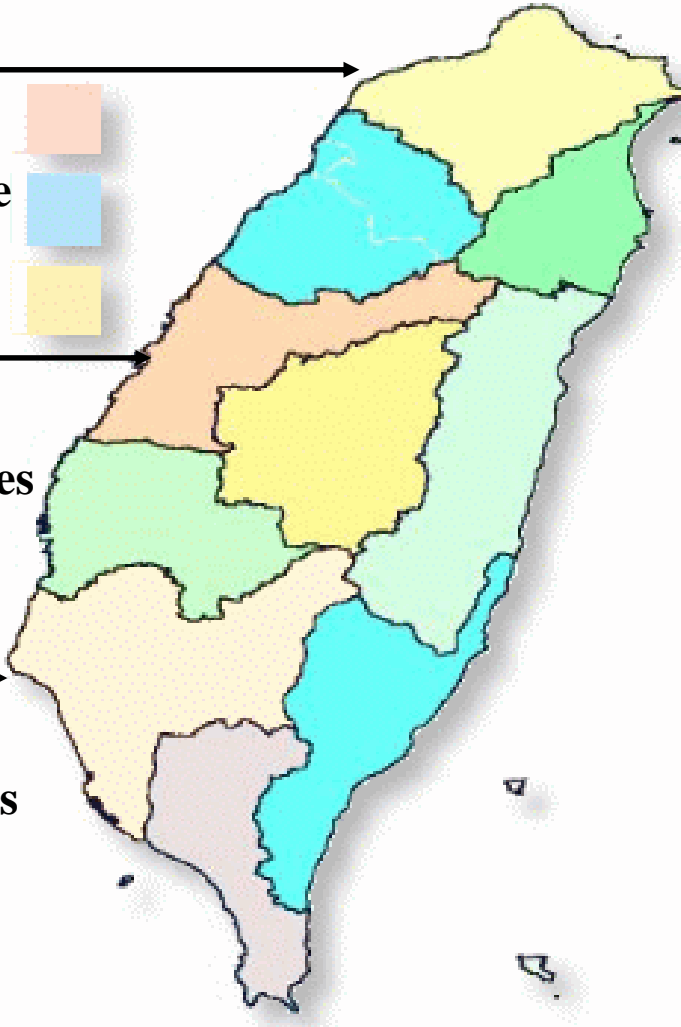
3 sales teams

Sales force: 56 people

South

3 areas sales team

Sales force: 62 people



CYH has more than 190 sales provide quality services for our customers

Distribution Channels

- Hospital: 530
- Clinic: 8,000
- Drug store: 4,000
- Distributor

CYH Business Strategy

- **Keep Revenue and Profit Growing**

- **Prescription products**

- ✓ CCPC products
- ✓ License-in products

- **OTC products**

- ✓ CCPC products
- ✓ License-in products

- **Export, License-out**

- ✓ Hong Kong, Vietnam, etc.



Chunghwa Biomedical Technology Corp. (CBT)

- Founded in March, 2006
- CBT is 100% owned by CCPC
- Consumer Product Division
- Health Care Division
 - ✓ Providing non-medical senior homecare services
- Total employees: 53 people



Consumer Product Division

- 26 employees
- 4 brands
 - ✓ Smiling – Oral cavity hygiene
 - ✓ Green – Personal care cleaner
 - ✓ Better Life – Food supplement
 - ✓ KOZI – Cosmetics (ex: facial mask)



Healthcare Division

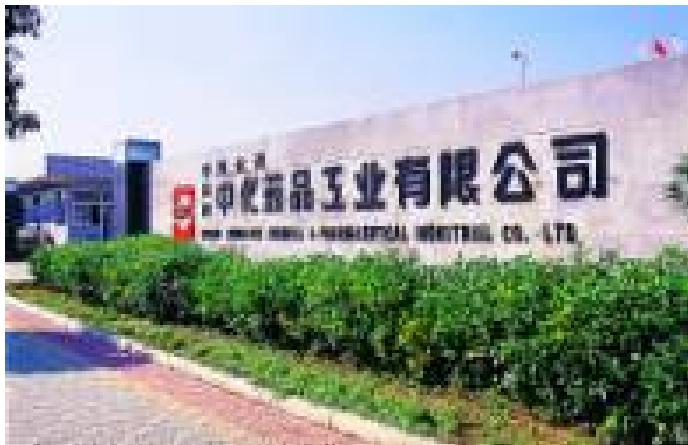
◆Non-Medical Senior Homecare Services

- ✓ 6 employees
- ✓ U.S. Home Instead Senior Care's No.10 international franchisee (Duskin is the franchisee in Japan) **DUSKIN**
喜びのタネをまこう
- ✓ Home Instead Senior Care is the world most trusted non-medical senior homecare service provider.



Suzhou Chung-Hwa Chemical & Pharmaceutical Industrial Co., Ltd (SCCPC)

- Established in April,1993
- Total investment: US \$55 Million
- Location: Suzhou Hi-Tech Industrial District, Suzhou, China
- GMP Plant : 110,200 square meters



SCCPC Product Dosage Forms

- Product Dosage Form

- Sterile powder injection
- Tablet
- Capsule
- Granule
- Dis-infection solution for contact lenses
- Distilled water
- Antiseptic solution



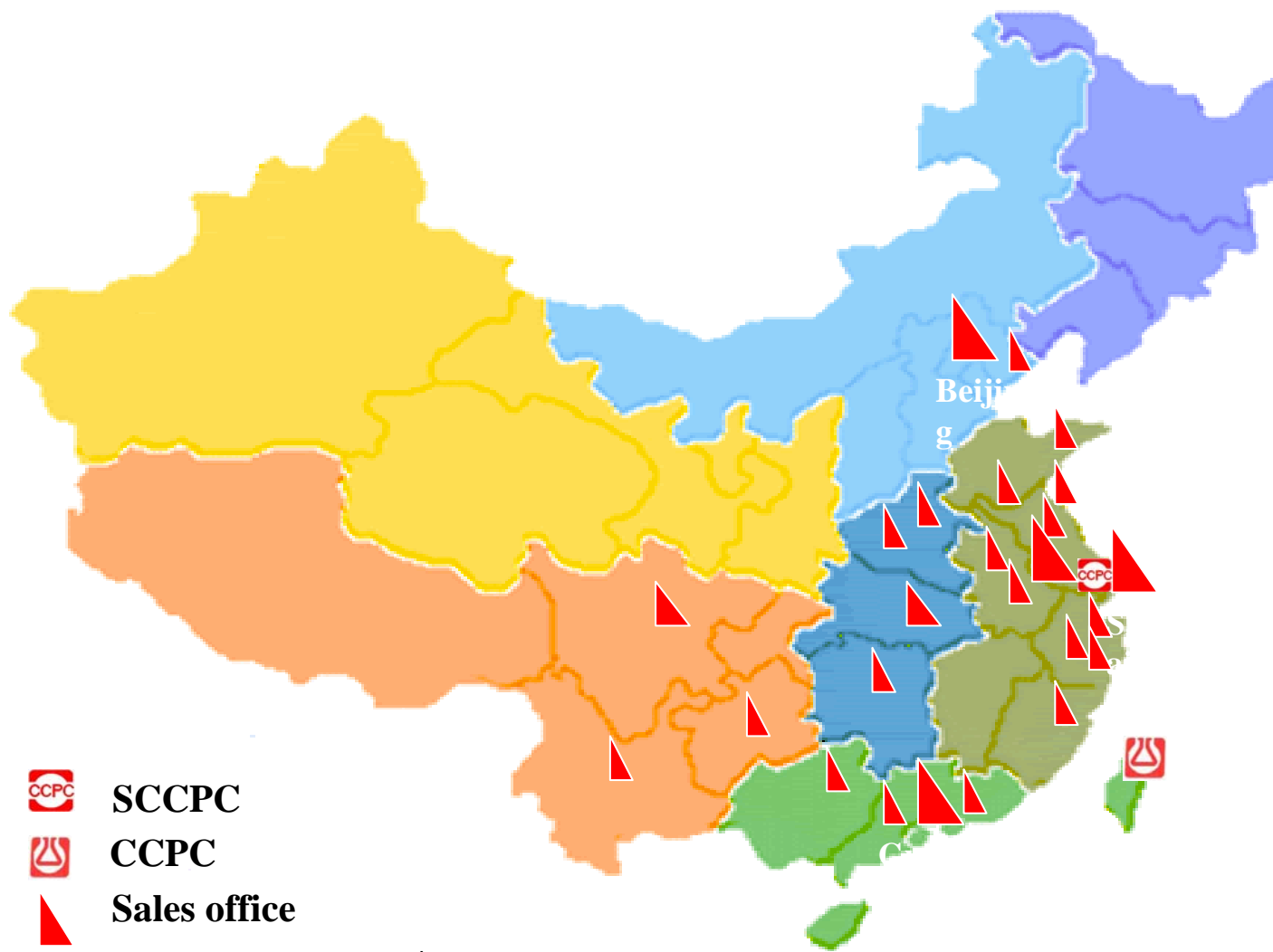
SCCPC Products

•Product category

- Antibiotics (Cefalosporins mainly)
- Hypolipidemics
- Gastrointestinal drug
- Gynaecological drug
- Antipyretics
- Hypoglycomics
- Antidepressant
- Disinfection solution for contact lenses
- Antiseptic solution



SCCPC Sales Networks



SCCPC



CCPC



Sales office

Sales: 2006 RMB \$185 millions



Thank You



Passion, Innovation, Care, Health



Contact Information



Kuo-Chang Tsai

Associate Vice President

Production Department

China Chemical & Pharmaceutical Co.

No. 182-1, Shangkeng Village

Sinfong Township

Hsinchu County, Taiwan

Tel: +886-3-5599866 ext.800

Fax: +886-3-5599094

Email: tsaikuochang@ccpc.com.tw

Willie Lin Ph.D.

Associate Vice President

Strategy & Planning Department

China Chemical & Pharmaceutical Co.

23, Hsiang Yang Road

Taipei, Taiwan

Tel: +886-2-23124239

Fax: +886-2-23615143

Email: willielin@ccpc.com.tw

